



The impact of the widening gap



With the cost of living continuing to rise, people are experiencing stress and ill health as they struggle with the gap between the cost of their bills and what they can afford to pay.

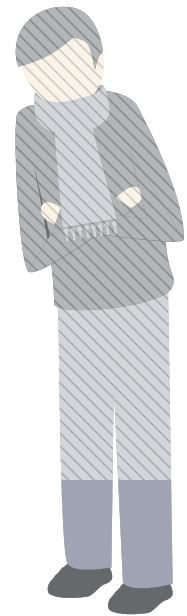
11%

of employed people took out a payday loan



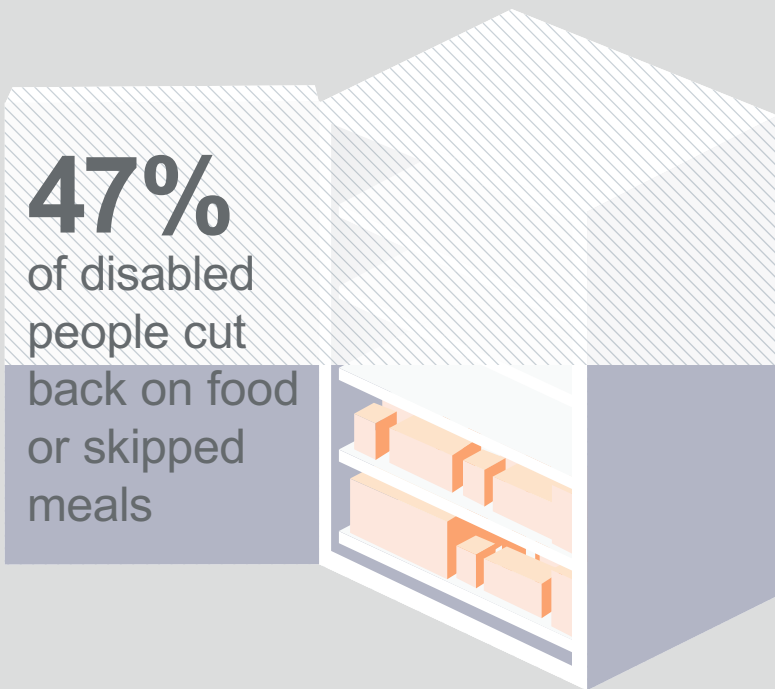
22%

of low income households* experienced ill health and pain due to cold homes



47%

of disabled people cut back on food or skipped meals



36%

of low income households* resorted to borrowing money from family and friends



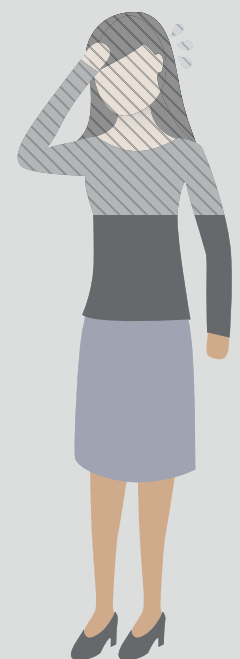
46%

of low income households won't be using heating in their homes



68%

suffered from stress due to struggling with their energy bills



Visit: turn2us.org.uk/fuelpoverty  : #fuelpovertygap

*Adults with gross annual incomes of £25,000 and less. Total sample size 1091 adults with annual household incomes under £40,000 (Nov – Dec 2012).

WAY OUT 